

 **NORFOLK**  
**MINOR HOCKEY ASSOCIATION**



# Norfolk County Minor Hockey Association

Proposal Highlights

# Rep Hockey Partnership

---

- Through discussions amongst our respective executives, Port Dover Minor Hockey, Simcoe Minor Hockey and Waterford Minor Hockey recognized that we share the following priorities and challenges:
  - Our priority is to offer our members a hockey program that maximizes development and enjoyment of the game.
  - To maximize development and enjoyment, forming teams with players of consistent ability is necessary.
  - Currently, local associations are facing challenges offering full rep hockey programming, offering AE programs, and/or seeing significant imbalance within and amongst local league teams.

# Rep Hockey Partnership

---

- All associations agree that a full amalgamation is not appealing.
- We want to maintain the community spirit of our local associations and our local league hockey experience, while cooperating at the Rep hockey level to enhance the development and enjoyment realized by players at all levels.
- To accomplish this we are proposing the Rep Hockey Partnership Model, which will result in existing Local Associations remaining as Local League Centres and together forming a new Norfolk County Minor Hockey association to run a joint Rep Hockey Program.

# Local Leagues

- The existing Local Leagues will continue, structurally unchanged:
  - Provide fun, recreational hockey for ~70% of players
  - Kids play locally in their community rinks with their friends
  - Pride of “representing” their home communities
  - Realize more consistent abilities within and between teams
  - Provide a mechanism for communities to elect their local Minor Hockey Directors & to engage local sponsors & volunteers





# Partnership Model

- The Rep Partnership Agreement sets out the relationship between the Parties:
  - Clearly defines the rights, obligations and relationship between the Partners
  - Provides the legal platform for a new, jointly-administered Norfolk County Minor Hockey Association to run a Norfolk rep hockey program

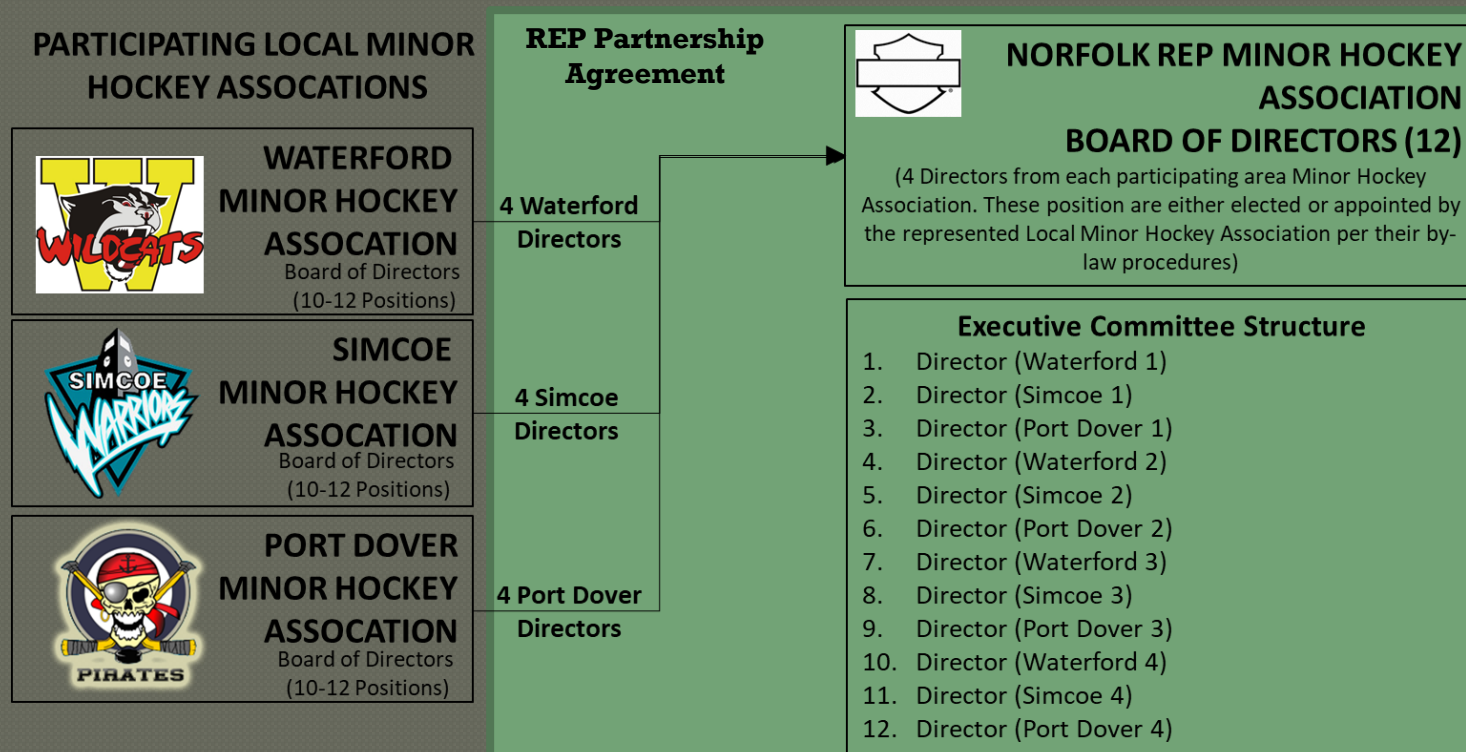
REP Partnership Agreement  
Creation of Norfolk County  
Minor Hockey



# Partnership Model

## Proposed Structure:

- Local League organizations will transfer their OMHA Rep hockey rights to the Norfolk County Minor Hockey Association
- Elected Directors from the Local League Boards will sit on the Norfolk Minor Hockey Board, providing equal representation from each Local League organization



# The Big Picture:

## Benefits of the Rep Partnership

---

- Preserves Our Hometown Hockey Experience ✓
- Preserves Independence of Local Boards on Local Issues ✓
- Ensures Local League Teams Remain in Local Rinks ✓
- Creates a New “A” Program that each Local Centre Feeds Into ✓
- Creates a ‘Rep’ Board Structure with Equal Representation ✓
- Agreed principals on Coach Selection and Tryouts to ensure fairness and representation by all Associations ✓
- AAA Affiliation – no change ✓
- Maximizes use of Norfolk County rinks ✓
- Will result in teams with balanced ability, thereby maximizing development and fun for players at all levels ✓



# Partnership Highlights

---

- Membership Rights:

- Players and families will continue to be Members of their existing Local Associations
- Members of the Local Associations will participate indirectly in the administration of Norfolk County Minor Hockey by their Local Association's Board electing Local Directors to the Norfolk County Minor Hockey Board
- Members are still entitled to attend Norfolk Minor Hockey Membership Meetings, to be informed about Association activities, ask questions and participate in meetings – but their elected Delegates will represent their local community interests on the Norfolk Board

# Partnership Highlights

---

- Proposed Structure:

- Overall Board structure ensures that Voting Directors are equally balanced between all Associations
- Any future issue that might seek to change the basic partnership structure, including admitting new partners, would need the consent of ALL Local Associations
- Day to Day Business: Simple Majority of the Board would determine decisions. In the event of a deadlock on major issues, a mutually agreeable OMHA Representative will help to resolve the concern

# Partnership Highlights

---

- Financial Issues:

- Local Associations will maintain their independent finances.
- Local Associations will loan start-up capital to the new Norfolk County Minor Hockey Association, to be repaid on agreed terms. Loans from each association will be for equal amounts.
- Local league player registration will be unaffected. Norfolk Minor Hockey will establish a separate registration portal.

# Partnership Highlights

---

- Territory and Border Issues:

- Currently all Norfolk associations are subject to the 8km rule. We propose this will continue, subject to OMHA approval.
- New Centre Point will be selected
- Right of Choice – All players will have a refreshed Right of Choice
- Existing Players - all existing players will have grandfathered rights to stay with their existing association
- Import Players – number permitted to be determined by OMHA
- Loop – To work with OMHA to select the best loop. This will only be discussed following formation
- AAA Rights – no change, will remain with Brantford, subject to OMHA future determinations

# Partnership Highlights

---

- Category of Play for Rep Teams:
  - Intention is to be an “A” Centre, subject to OMHA approval
  - Allows for Minor and Major Teams at all Age Divisions
  - Intent is to allow kids to play and develop at appropriate age and skill level where they are best positioned to be successful and have fun
  - Larger pool of players will allow for teams comprised of more consistent ability
  - Opportunities for AE Teams in situations where there are strong player numbers and interest
  - Local League players can AP to Norfolk County Rep Teams from each Local Association



# 2017-2018 Registration

---

<u>Association</u>	<u>Classification</u>	<u>Registration</u>
Simcoe	B	436
Port Dover	C	231
Waterford	CC	294
Total		961
<hr/>		
Total		
Caledonia	BB	565
New Hamburg	A	739
Ancaster	A	999
King Township	A	643
Grimsby	A	984
Caledon	AA	1283
Aurora	AA	1488
New Tecumseth	AA	935

# Partnership Highlights

---

- Termination of Agreement:

- Automatic Review Period at the 2 Year Mark
- Up to and including 2<sup>nd</sup> Anniversary, any Party can exit partnership and return to previous status quo with fully independent LL and Rep Programs
- After the 2<sup>nd</sup> Anniversary – the exiting party returns to be an independent Local League Centre only and full OMHA Rep rights remain with Norfolk County Minor Hockey Association
- Provides reasonable opportunity for all Parties to try out this arrangement and see how it works
- 2 year deadline creates some certainty going forward – and consequences to motivate Local Associations to cooperate

# Conclusions

---

- Partnership Model consistent with history & traditions of Norfolk County communities and preserves each town's local identity
- Achieves a large, competitive and robust "A" Centre
- Promotes player retention
- Leaves independence at the Local League level, while allowing cooperation at the Rep level to enhance all hockey opportunities
- Local League centres don't lose their identity and partnership of equals provides better hockey opportunities for all players
- For 70% of membership at Local League level – *no changes, more balance within and between teams*
- For 30% of membership at Rep level – *better quality hockey experience with more balance in abilities within teams*